

INDESIGNLIVE.SG

#72 | FEBRUARY | MARCH | 2015



cubes

INDESIGN

INTERIORS ARCHITECTURE DESIGN

FORMWERKZ AND THE PERCEPTION OF SPACE

NERI&HU | LINGHAO ARCHITECTS | SINGAPORE SPORTS HUB BY ARUP, DP ARCHITECTS & AECOM
TWO GENERATIONS HOUSE BY KAY NGEEN TAN ARCHITECTS | SGX METROPOLIS BY SCA DESIGN

RICHNESS AND RESTRAINT

KAY NGEE TAN ARCHITECTS
TEMPER AUSTERITY WITH
WARMTH IN THIS HOME,
INSPIRED BY THE HUI STYLE,
FOR MOTHER AND SONS.

A plane of stone is played off
against concrete above the
main entrance

75 | CUBES 72

INDESIGNLIVE.SG



Above: A serene garden is enclosed by the two arms of the U-shaped main house. The designed restraint continues in the landscape

Right: The main house, viewed across the pool from the younger son's annexe wing. The roof plane extends outward protectively



TEXT * JAN LIM
PHOTOGRAPHY * EDWARD HENDRICKS



STANDING AT THE ENTRANCE of this house at Peirce Hill, one senses two distinct personalities residing within. To the right, the main house projects an imposing aura, with a closed and almost impregnable facade of granite and off-form concrete. In contrast, timber lattice screens partially define fluid, semi-outdoor spaces in the annexe wing on the left. It comes as no surprise when architect Tan Kay Ngee introduces this as a home for two generations: a mother, who resides in the main house, and her sons, the younger of whom occupies the annexe wing.

In many ways the house symbolises the mother's desire for her sons, who have been staying abroad, to return, and the value she places on family ties. "A house is about the relationships between people. We try to design spaces that will bring the occupants closer together in an uncontrived way," Tan shares. The studio was also tasked with interpreting how two generations could live comfortably together under the same roof while respecting each other's privacy.



The austere exterior of the main house belies an intimate, restful interior that makes one feel immediately at home. A courtyard garden serves as the anchor of the main house – significant given the mother’s love of plants – and living spaces, bedrooms and the kitchen are organised around it in a U-shaped configuration. Overlooking the garden, an outdoor bridge connects the mother’s bedroom to the elder son’s, each mirroring the other in balanced symmetry. Over at the annexe wing, the architecture begins to express the younger son’s love of the outdoors through an airy, double-volume lounge that is open to the elements on both longitudinal sides.

There is a notable sense of restraint in the colour palette, as well as the selection and treatment of materials. Tan explains that he is inspired by the architecture from the historical region of Huizhou in China’s Anhui province, which is traditionally both stark and beautiful with dark grey clay-tiled roofs and whitewashed walls. In a similar spirit, plywood, used in building the cabinetry of the walk-in wardrobes, is given a natural finish, without veneer or paint. In the roof, the soffits are finished with natural marine plywood. “The beauty of the wood grain becomes part of the design,” Tan remarks. The effect is raw, yet refined.

Quiet, thoughtful detailing can be observed throughout the home. Doors, for example, have been designed so they sit neatly flush with the reveal when fully open, providing crisp passageways between rooms. Carefully proportioned windows are reminiscent of Chinese hanging scrolls. And on the second floor, an interior display cabinet is expressed on the exterior by a granite component on an otherwise concrete facade. Pushed outward from the concrete surface, it establishes a slit through which daylight brings a soft backlit glow to the internal display.



Top: In the annexe wing, the partial enclosure of the double-volume semi-outdoor lounge creates a cool, casual space

Bottom: A small kitchen services the semi-outdoor lounge. An upstairs corridor leads to the bedroom

“A HOUSE IS ABOUT THE RELATIONSHIPS BETWEEN PEOPLE. WE TRY TO DESIGN SPACES THAT WILL BRING THE OCCUPANTS CLOSER TOGETHER IN AN UNCONTRIVED WAY.”

• TAN KAY NGEE

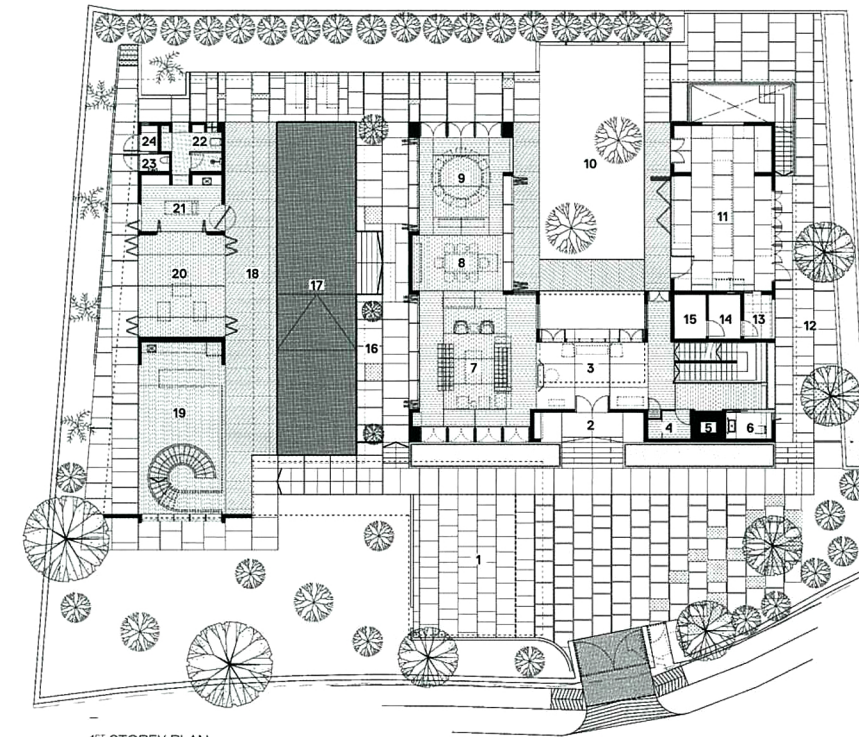


Above: In the kitchen, warm timber tones balance with silver quartz granite flooring and stainless steel

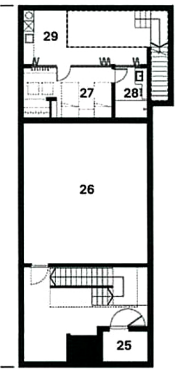


Above: Greenery is glimpsed from the double-volume entrance hall. The stairway leads up to the master wing

Right: In the annexe, the language of delicate timber screening is continued



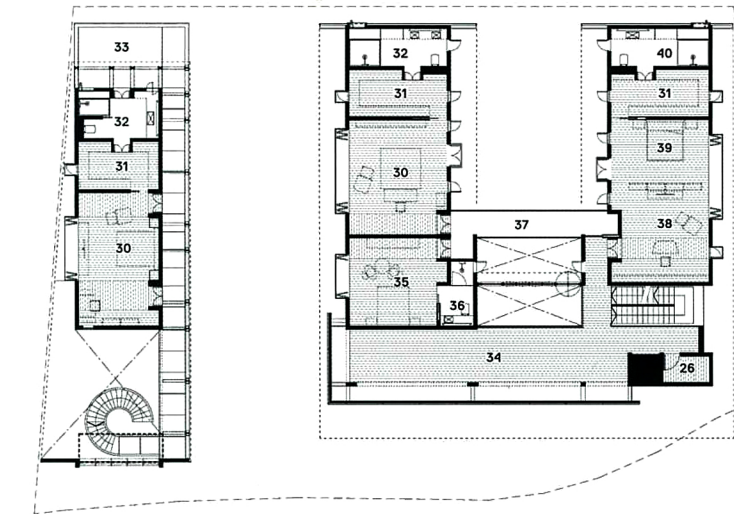
1ST STOREY PLAN



BASEMENT PLAN

LEGEND

- 1 Car Porch | 2 Entrance | 3 Hall | 4 Shoe Storage | 5 Lift | 6 Powder Room | 7 Living Room | 8 Formal Dining | 9 Family Dining | 10 Enclosed Garden | 11 Kitchen | 12 Outdoor Kitchen | 13 Dry Food Storage | 14 Walk-In Fridge | 15 Walk-In Freezer | 16 Breakfast Deck | 17 Swimming Pool | 18 Pool Deck | 19 Semi-Outdoor Lounge | 20 Gym and Plates | 21 Massage Room | 22 Gym Bath | 23 Driver's Toilet | 24 Gardener's Store | 25 Household Shelter | 26 Storage | 27 Helpers' Room | 28 Helpers' Bathroom | 29 Laundry Area | 30 Bedroom | 31 Walk-In Wardrobe | 32 Bathroom | 33 Outdoor Patio | 34 Display Area | 35 Guest Room | 36 Guest Bath | 37 Outdoor Linkway | 38 Master Study | 39 Master Bedroom | 40 Master Bathroom



2ND STOREY PLAN





Above: A display area enjoys a filtered view of the enclosed garden

USING MOST MATERIALS IN THEIR NATURAL STATE, TAN HAS CREATED A HOME THAT IS DIGNIFIED IN ITS SIMPLICITY, AND RICH WITH DELIGHTFUL DETAILS.

There are surprising moments of connection between the main house and the annexe wing. For instance, the same timber lattice screens of the annexe wing also greet one at the entrance hall of the main house. There are further parallels in the way stone and timber wrap around the edges of the main house and annexe wing respectively, forming an understated composition of horizontal and vertical L-shaped elements.

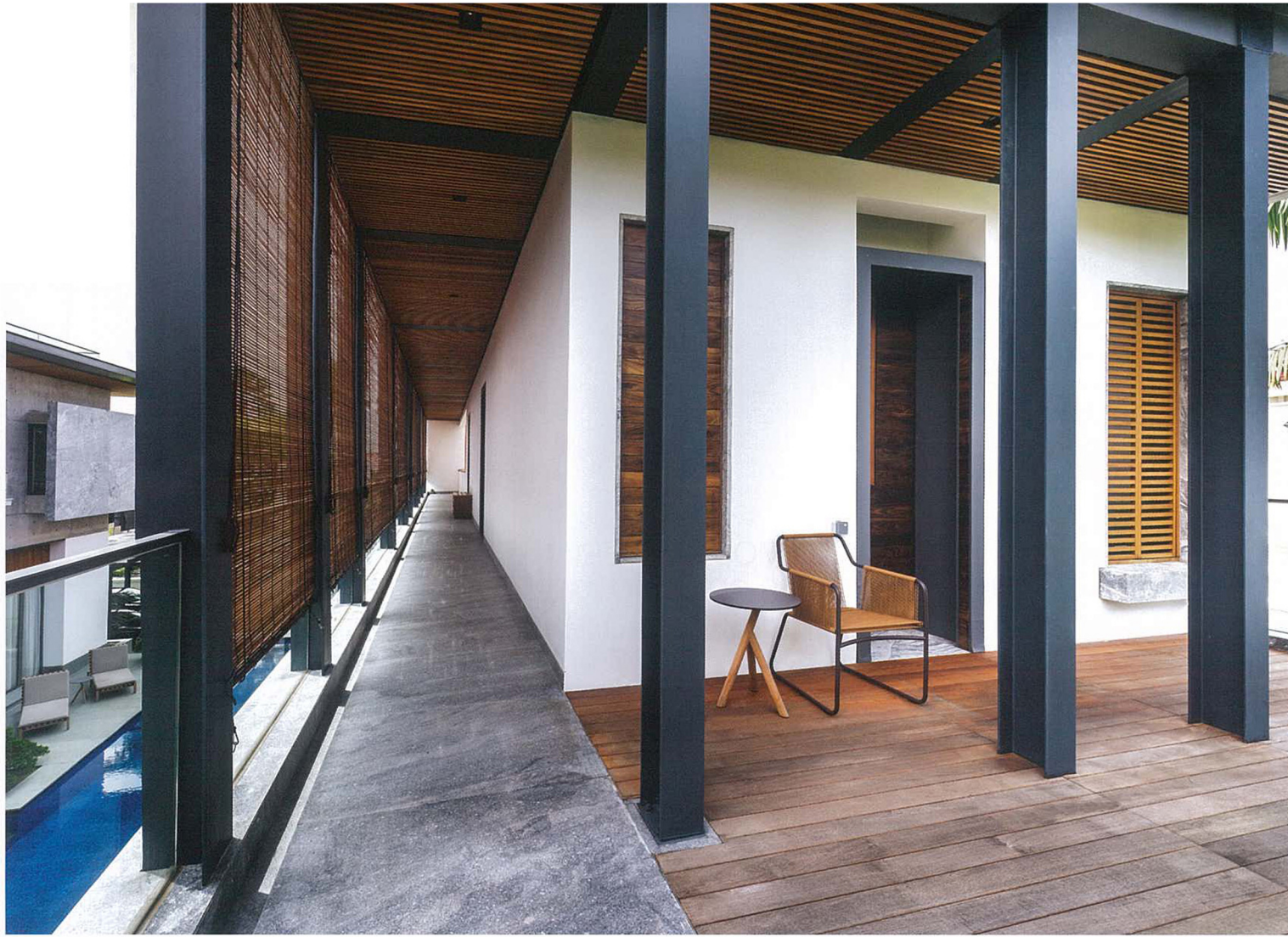
Finally, a lightweight porous stone was sourced from the historic town of Ahlat, Turkey to create the secondary roof and rear elevation. Besides its ability to regulate interior temperatures, this material was also selected for its reddish-brown tones, which Tan felt complemented the primarily grey-and-white palette of the house. With the roof raised at a slight angle, a gap is introduced beneath to promote air circulation and keep the rooms cool during the day.

Designing a home often requires negotiating the fine balance between the needs and aspirations of the various individuals that are to inhabit the space. Tan is sensitive to the needs of both mother and sons to maintain individual lifestyles, and goes beyond that to reflect their personalities in the design of their home. In opting to use most materials in their natural state, he has created a home that is dignified in its simplicity, and rich with delightful details. "Both sons have told me that they really enjoyed the house," Tan says. "The elder one is now thinking of coming back too!"



Top: The master bedroom and study are notionally separated by open shelving

Bottom: The daily ritual of bathing and the richness of material are the focus in the bathrooms



THERE ARE SURPRISING MOMENTS OF CONNECTION BETWEEN THE MAIN HOUSE AND THE ANNEXE WING.



TWO GENERATIONS HOUSE

ARCHITECTURE FIRM Kay Ngee Tan Architects

PROJECT TEAM MEMBERS Tan Kay Ngee (Principal Architect), Tan Wei Liat, Han Kiang Siew, Phuah Hong Thye, Melvin Sum, Pamela Tan

BUILDER PQS Consultants

C&S ENGINEER Ronnie & Koh Consultants Pte Ltd

M&E ENGINEER HY M&E Consultancy Services Pte Ltd

QUANTITY SURVEYOR PQS Consultants

TIME TO COMPLETE 21 Months

TOTAL FLOOR AREA 1,097 sqm

KAY NGEETAN ARCHITECTS

(65) 6423 0198 kayngeetanarchitects.com

FINISHES

Silver Quartz Granite on Exterior Feature Wall and Master Bathroom Interior Wall. Off-Form Concrete on Front Facade of Main House. Ah Lat Stone on Rear Facade of Main House. Generally Throughout, Plaster and Paint Exterior and Interior Wall Finish.

Juparana Granite on Powder Room and Guest Bathroom Walls and Floors. Bianco Vitz Granite on Gym Bath, Bathroom 1 and Bathroom 2 Walls and Floors. Generally Throughout, Solid Burmese Teak Interior Floor Finish. Silver Quartz Granite Floor Finish in Entrance Area, Kitchen and Master Bathroom. Power Coated Aluminium Frame Windows. Solid Burmese Teak Main Door. Generally Throughout, Doors have Solid Indian Rose Wood Panelling and Solid Burmese Teak Handles. Solid Burmese Teak Screens. Bisazza Mosaic Tiles in Pool. Generally Throughout, Olive Green Granite Exterior Floor Finish and Solid Burmese Teak Outdoor Deck. Ash Grey Granite Exterior Floor Finish in Linkways. Ah Lat Stone Roofing. Interior Balustrade is Glass with Painted Steel Handrail.

FIXED AND FITTED

Generally Throughout, Toshiba ACMV System, Hansgrohe AXOR Sanitary Fittings from Hansgrohe and TOTO Sanitary Wares from W.Atelier. Arclinea Appliances in Kitchen and Younger Son's Block Pantry from Interni Mobili & Design.

LIGHTING

Generally Throughout, Recessed Lighting and Outdoor Lighting from Kreon.

FURNITURE

Furniture Supplied by Interni Mobili & Design. In Living Room, Derby and Progetti Sofas, Derby and Denny Armchairs, Leo Coffee Table and Aei Cabinets all by Giorgetti. In Dining Room, Yli Custom Rectangular Dining Table, Fang Round Dining Table, Aro Dining Chairs and Aei Console all by Giorgetti. In Master Bedroom, Rea Bed and Ion Study Table by Giorgetti; Infinito Bookshelf by Cassina. In Younger Son's Extension, Spool Outdoor Furniture by Roda. Mistral Poolside Furniture by Roda. On Second Floor, PK80 Daybed by Fritz Hansen and Nomad Coffee Table by Henge.

Hansgrohe (65) 6884 5060 hansgrohe.com.sg **Interni Mobili & Design** (39) 02 2906 3421 internionline.it **Kreon** (65) 6222 3393 kreon.com **W.Atelier** (65) 6270 8828 watelier.com

Top: An outdoor patio with Burmese teak decking caps the far end of the annexe wing

Left: An outdoor linkway connects the master wing and the guest (older son's) wing in the main house, yet retains a distinct separation